

Portfolio

föy

Introducing Föy Studio, a multidisciplinary design studio based in London, focused on branding, UI/UX, print & digital design.

Imagine an environment nourished by design, where ideas become reality. A world in which your feelings, dreams and passions will turn from being abstract into concrete works. Föy Studio works with the clients by forming a partnership and gives them full experience of understanding their brand needs and guide them through their visual communication journey.

Föy Studio, design, produce and apply projects by being completely trustworthy, reachable and bespoke.

The logo for Föy Studio, featuring the word "föy" in a stylized, orange, lowercase serif font. The 'f' has a thin vertical stem, and the 'ö' has two distinct dots above it. The 'y' has a long, elegant tail that curves upwards and to the right.



FRUIT AND NUT BARS

With Mediterranean Sun-Kissed Ingredients, our natural energy bars are delicious, nutritious, free-from in varied flavours and rich in fibre. It is Natural source, delicious combination. Premium dates as a base with high fibre value and rich nutritional values for the day and achieve a truly magical flavour.



APPLE & CINNAMON
A classic combination of sweetness and spice, the apple adds fibre and cinnamon naturally helps to regulate blood sugar levels.
40g.



COCONUT
We packed the natural goodness of coconut into this natural bar, with a taste of sunshine in every bite.
40g.



PLANT-BASED PROTEIN
12% Plant-based protein it couldn't be otherwise!
40g.



CHERRY & PEANUT
Cheerful cherry and perky peanut, a perfect match.
40g.



NUTS & BERRIES
One of our most popular bars with mixed berries and nuts.
40g.



RAW CACAO
Raw Cacao is the new black.
40g.



CHIA & CHOCO
We combined the healthy fibre of Chia with cacao nibs and 25% plant-based protein powder.
40g.



PISTACHIO & CRANBERRY
Cranberry and pistachio, a very fresh flavor.
40g.



ORANGE & HAZELNUT
25% plant-based protein powder, Orange and hazelnut, experience this much-loved taste with us.
40g.

FUNCTIONAL SUPERFOOD BARS

Superfood Makes it Super Nutritious

More than natural ingredients paired with superfoods to support adults and kids with love and care such as: Kids, Prebiotic, Baobab, Keto, Protein, Collagen, Moringa and Daily.



KETO 15% PROTEIN
Low Sugar, No fruit, just nuts & seeds.
40g.



KETO 20% PROTEIN
Low Sugar, No fruit, just nuts & seeds.
40g.



PEANUT & CACAO
20% Plant-based Protein, Vegan
25g.



BAOBAB
Vitamin C, High Fibre
30g.



COLLAGEN
High Vitamin C, Non-Vegan
30g.



DAILY
12 Vitamins, 9 Minerals
30g.



KIDS
High Fibre
A-B-C-D-E Vitamins
30g.



MORINGA
High Fibre, Calcium, Iron
Magnesium, Potassium
33g.

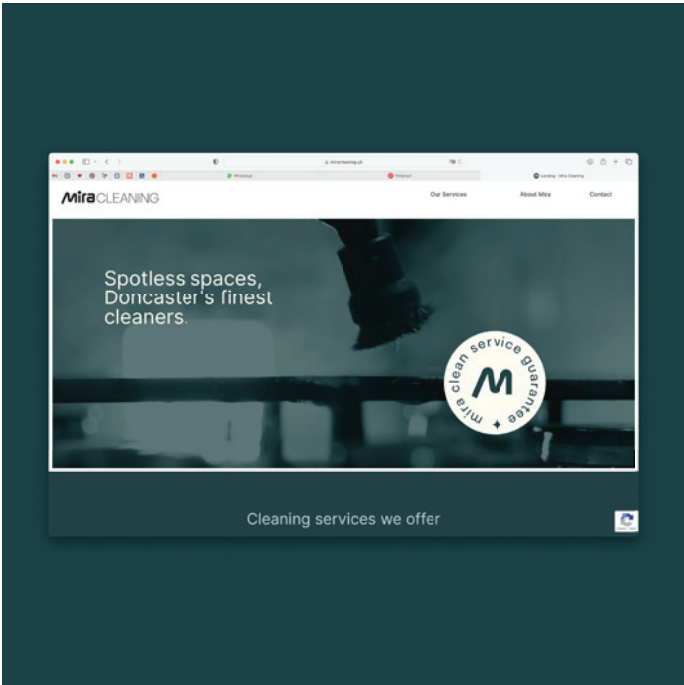


PREBIOTIC
High Fibre
30g.



MIRA Cleaning

Logo, Identity Design & Web Design



Planc Light
Planc Regular
Planc Bold

Gunmetal

HEX 292E31

C 76	R 41
M 64	G 46
Y 60	B 49
K 61	

Midnight Green

HEX 1C4348

C 92	R 28
M 56	G 67
Y 58	B 72
K 43	

Light Blue

HEX B4D8D6

C 32	R 180
M 1	G 216
Y 16	B 214
K 0	

Ivory

HEX FDFFF1

C 1	R 253
M 0	G 255
Y 6	B 241
K 0	



VERDE

Diana Mercado

Diana Mercado
Verde

Book Design



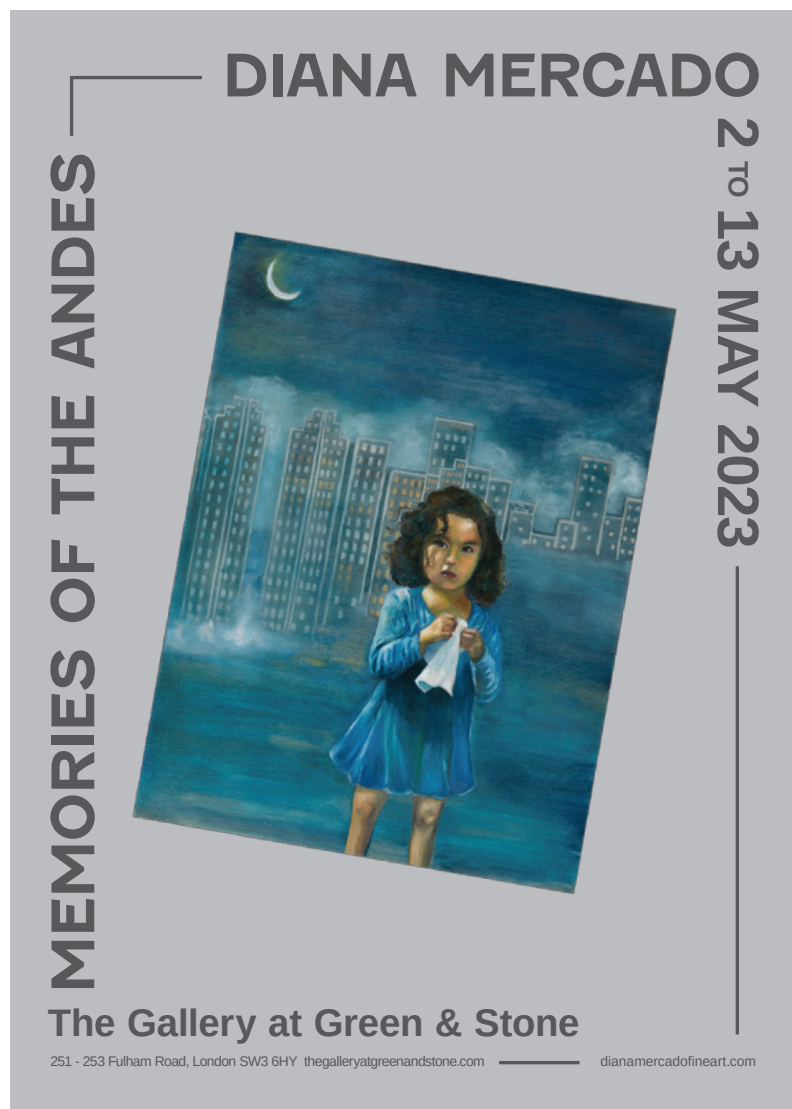
Diana Mercado

Monogram Design



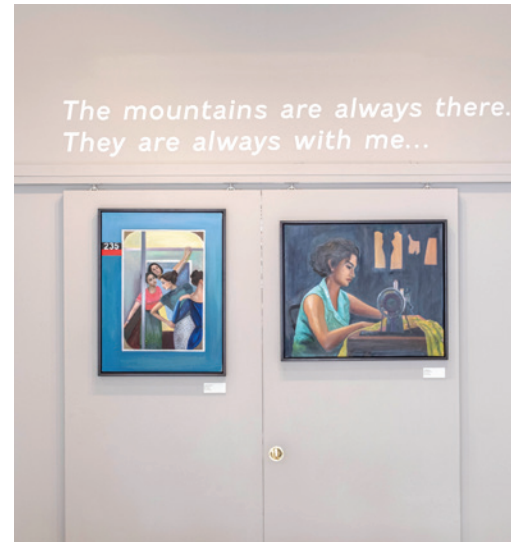
Diana Mercado
Memories of the Andes

Exhibition Design



Diana Mercado
Memories of the Andes

Exhibition Design



Diana Mercado
Memories of the Andes

Exhibition Book

Recuerdos de Los Andes
Memories of the Andes

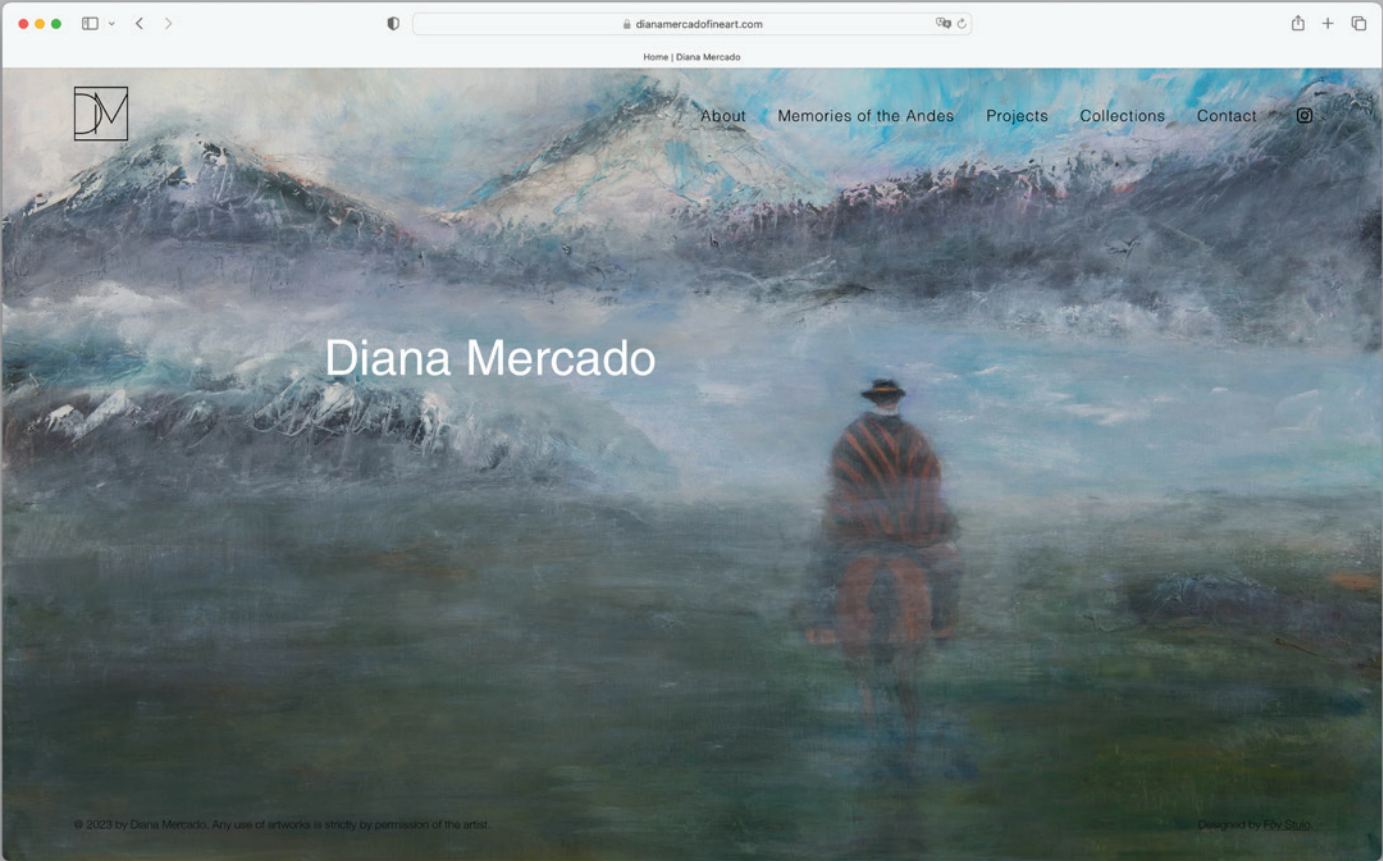
Diana Mercado was born in Guayaquil, Ecuador. She left Ecuador as a child and immigrated to the United States. Diana received her BA and MA from Columbia University. In 2009, she moved to London and began her artistic journey, studying at the Chelsea College of Arts, London, and The Art Academy, London, as well as the New York Academy of Art. Her first exhibitions, *Mujeres*, in London, and *Verde*, at Neiman Marcus in New York, took place in 2021. Her painting, *When I was Young*, was selected for exhibition in 2021 as part of the Combined Federal Campaign's Arts and Culture Show in Washington, D.C. *Recuerdos de Los Andes* is Diana's first solo exhibition in London. She now lives in New York and London, and her work is held in numerous private collections in both the United States and Great Britain.

Diana Mercado nació en Guayaquil, Ecuador. Ella dejó Ecuador de niña y emigró a los Estados Unidos. Diana recibió su licenciatura y maestría en la Universidad de Columbia. En el 2009 se mudó a Londres y empezó su viaje artístico, estudiando en la Chelsea College of Arts, en Londres, y en la Art Academy of Art. Sus exposiciones, *Mujeres*, en Londres, y *Verde*, en Nueva York, se realizaron en 2021. Su pintura, *When I was Young*, fue seleccionada para exhibirse en 2021 como parte del Combined Federal Campaign's Arts and Culture Show en Washington, D.C. *Recuerdos de Los Andes* es la primera exposición individual de Diana en Londres. Ella ahora vive en Nueva York y Londres, y su obra está en numerosas colecciones privadas en ambos Estados Unidos y Gran Bretaña.

Diana Mercado was born in Guayaquil, Ecuador. She left Ecuador as a child and immigrated to the United States. Diana received her BA and MA from Columbia University. In 2009, she moved to London and began her artistic journey, studying at the Chelsea College of Arts, London, and The Art Academy, London, as well as the New York Academy of Art. Her first exhibitions, *Mujeres*, in London, and *Verde*, at Neiman Marcus in New York, took place in 2021. Her painting, *When I was Young*, was selected for exhibition in 2021 as part of the Combined Federal Campaign's Arts and Culture Show in Washington, D.C. *Recuerdos de Los Andes* is Diana's first solo exhibition in London. She now lives in New York and London, and her work is held in numerous private collections in both the United States and Great Britain.

Diana Mercado nació en Guayaquil, Ecuador. Ella dejó Ecuador de niña y emigró a los Estados Unidos. Diana recibió su licenciatura y maestría de la Universidad de Columbia. En el 2009 se mudó a Londres y empezó su viaje artístico, estudiando en el Chelsea College of Arts, en Londres, así como en el New York Academy of Art. Sus primeras exposiciones, *Mujeres*, en Londres y *Verde*, en Neiman Marcus en Nueva York, se realizaron en el 2021. Su pintura, *Cuando era Niña* (When I was Young), fue seleccionada como parte de la exposición de la Combined Federal Campaign's Arts and Culture Show en Washington, D.C. *Recuerdos de Los Andes* es la primera exposición individual de Diana en Londres. Ella vive ahora en Londres y Nueva York y sus obras pueden ser encontradas en numerosas colecciones privadas en los Estados Unidos y Gran Bretaña.





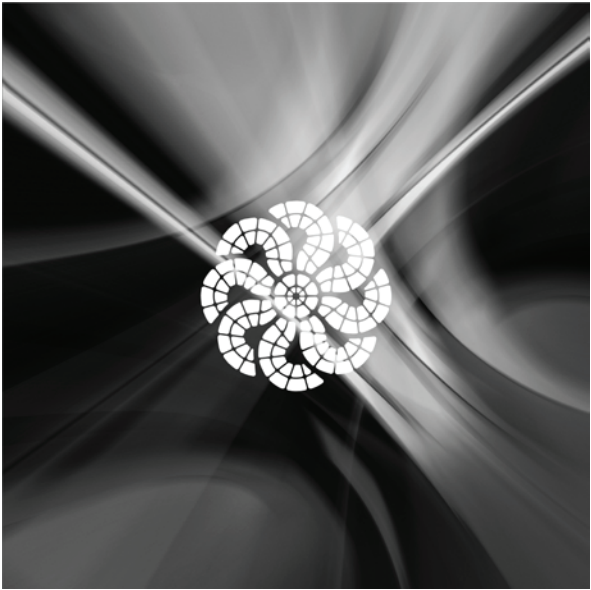
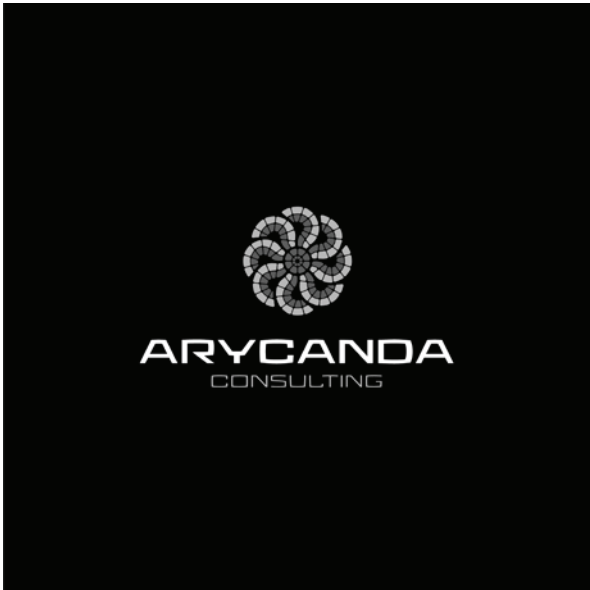
Just Us & Mrs Fix-it

Logo Design & Branding

JUST US }
GLOBAL LTD

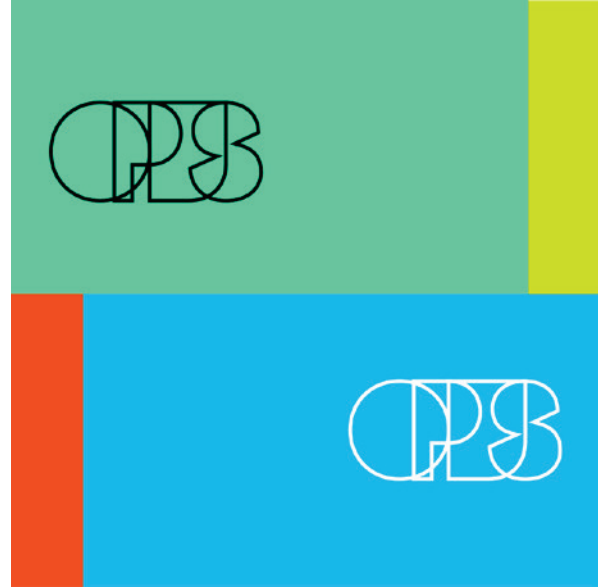
MRS FIX-IT
MANAGEMENT LTD





OPVS

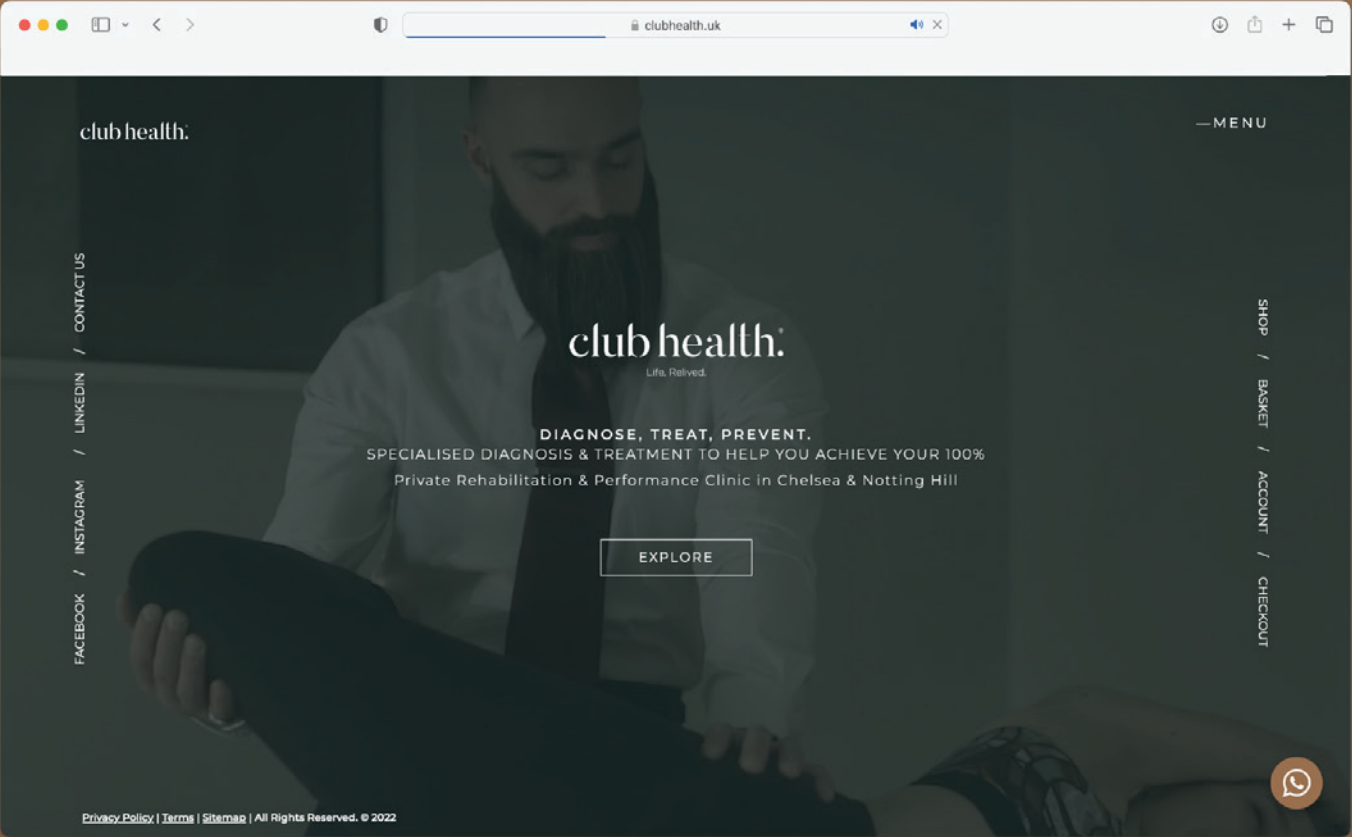
Logo Design & Branding

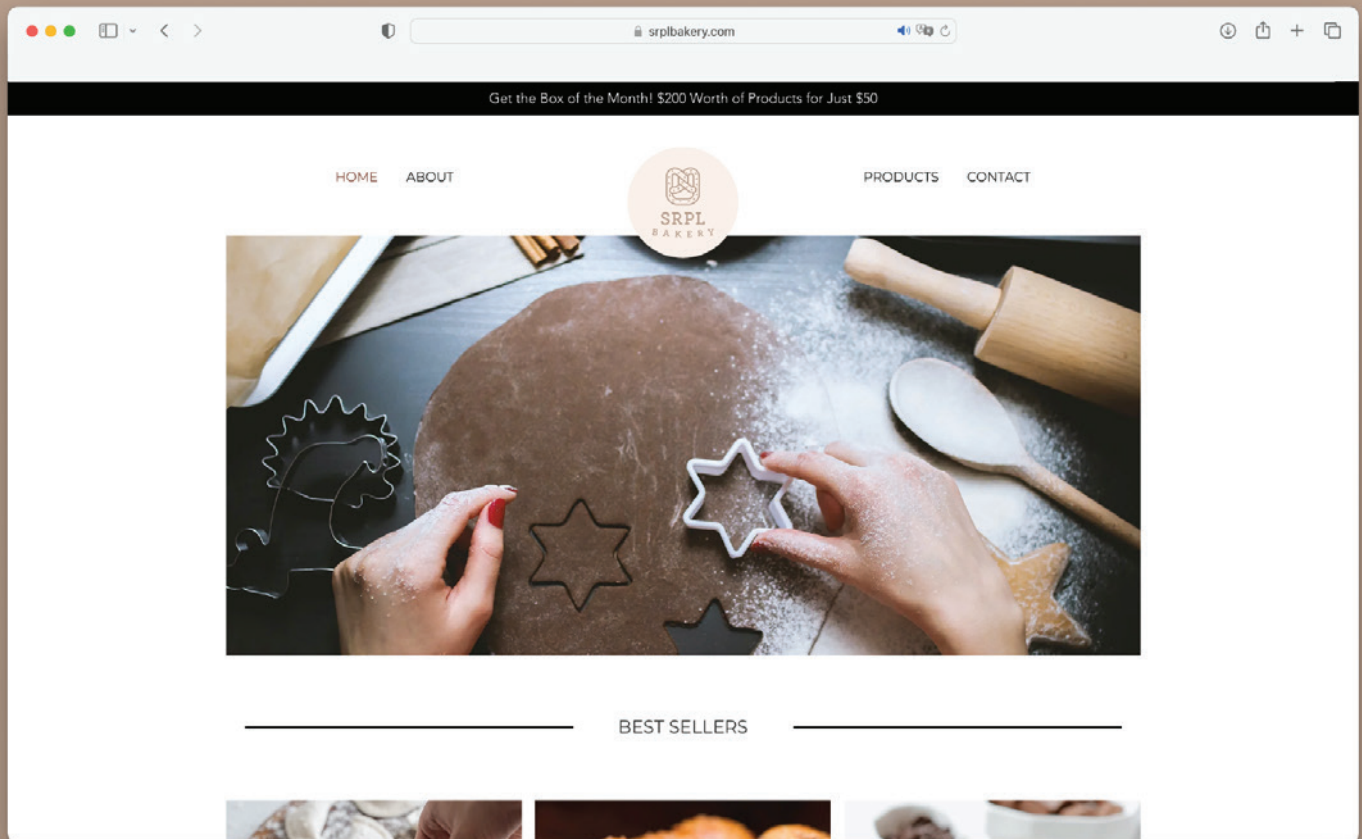


Choo Choo

Logo Design & Branding

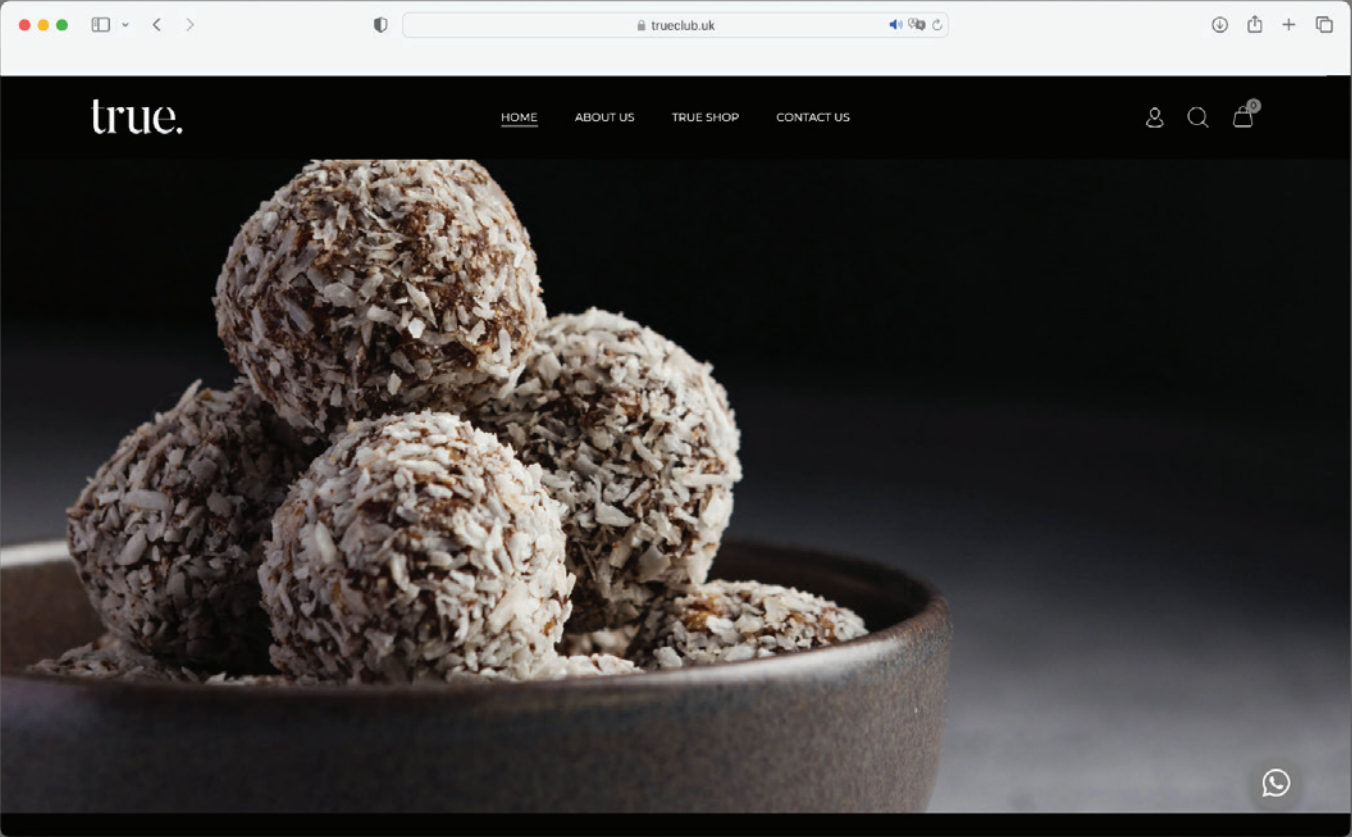






True

Web Design



Swedish Chamber of
Commerce

Logo Design & Branding

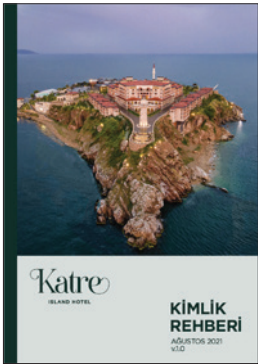


İsveç
Ticaret Merkezi
Derneği

Swedish
Chamber of
Commerce





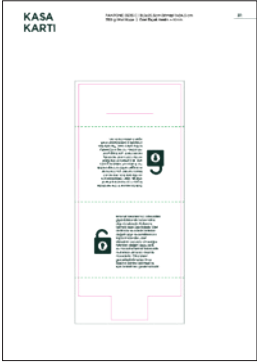


İÇİNDEKİLER

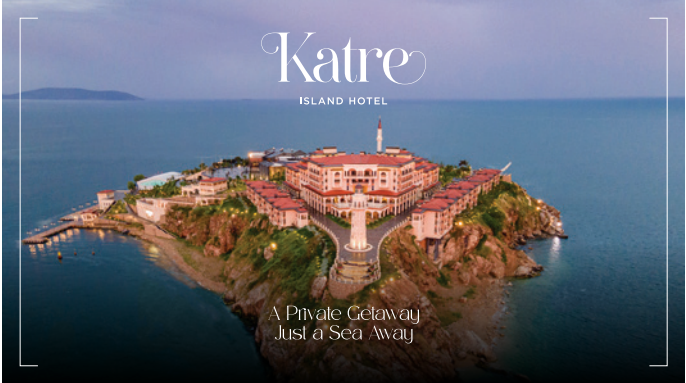
İÇİŞİLER		
Logo	1	Açıklama
Renk	2	Açıklama
Fontlar	3	Açıklama
Materyal Seçimi	4	Açıklama
İletişim Bilgileri	5	Açıklama
Özellikler	6	Açıklama
Özellikler	7	Açıklama
Özellikler	8	Açıklama
Özellikler	9	Açıklama
Özellikler	10	Açıklama
Özellikler	11	Açıklama
Özellikler	12	Açıklama
Özellikler	13	Açıklama
Özellikler	14	Açıklama
Özellikler	15	Açıklama
Özellikler	16	Açıklama
Özellikler	17	Açıklama
Özellikler	18	Açıklama
Özellikler	19	Açıklama
Özellikler	20	Açıklama
Özellikler	21	Açıklama
Özellikler	22	Açıklama
Özellikler	23	Açıklama
Özellikler	24	Açıklama
Özellikler	25	Açıklama
Özellikler	26	Açıklama
Özellikler	27	Açıklama
Özellikler	28	Açıklama
Özellikler	29	Açıklama
Özellikler	30	Açıklama
Özellikler	31	Açıklama
Özellikler	32	Açıklama
Özellikler	33	Açıklama
Özellikler	34	Açıklama
Özellikler	35	Açıklama
Özellikler	36	Açıklama
Özellikler	37	Açıklama
Özellikler	38	Açıklama
Özellikler	39	Açıklama
Özellikler	40	Açıklama
Özellikler	41	Açıklama
Özellikler	42	Açıklama
Özellikler	43	Açıklama
Özellikler	44	Açıklama
Özellikler	45	Açıklama
Özellikler	46	Açıklama
Özellikler	47	Açıklama
Özellikler	48	Açıklama
Özellikler	49	Açıklama
Özellikler	50	Açıklama
Özellikler	51	Açıklama
Özellikler	52	Açıklama
Özellikler	53	Açıklama
Özellikler	54	Açıklama
Özellikler	55	Açıklama
Özellikler	56	Açıklama
Özellikler	57	Açıklama
Özellikler	58	Açıklama
Özellikler	59	Açıklama
Özellikler	60	Açıklama
Özellikler	61	Açıklama
Özellikler	62	Açıklama
Özellikler	63	Açıklama
Özellikler	64	Açıklama
Özellikler	65	Açıklama
Özellikler	66	Açıklama
Özellikler	67	Açıklama
Özellikler	68	Açıklama
Özellikler	69	Açıklama
Özellikler	70	Açıklama
Özellikler	71	Açıklama
Özellikler	72	Açıklama
Özellikler	73	Açıklama
Özellikler	74	Açıklama
Özellikler	75	Açıklama
Özellikler	76	Açıklama
Özellikler	77	Açıklama
Özellikler	78	Açıklama
Özellikler	79	Açıklama
Özellikler	80	Açıklama
Özellikler	81	Açıklama
Özellikler	82	Açıklama
Özellikler	83	Açıklama
Özellikler	84	Açıklama
Özellikler	85	Açıklama
Özellikler	86	Açıklama
Özellikler	87	Açıklama
Özellikler	88	Açıklama
Özellikler	89	Açıklama
Özellikler	90	Açıklama
Özellikler	91	Açıklama
Özellikler	92	Açıklama
Özellikler	93	Açıklama
Özellikler	94	Açıklama
Özellikler	95	Açıklama
Özellikler	96	Açıklama
Özellikler	97	Açıklama
Özellikler	98	Açıklama
Özellikler	99	Açıklama
Özellikler	100	Açıklama

BÖLÜM 1

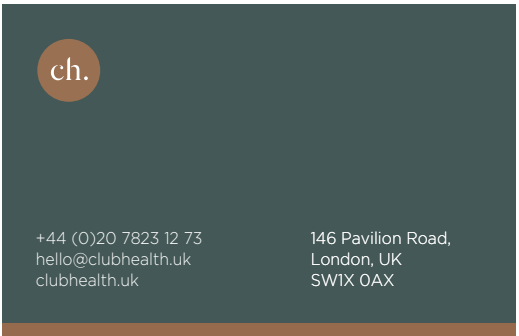
Logo	1
Renk	2
Fontlar	3
Materyal Seçimi	4
İletişim Bilgileri	5
Özellikler	6
Özellikler	7
Özellikler	8
Özellikler	9
Özellikler	10
Özellikler	11
Özellikler	12
Özellikler	13
Özellikler	14
Özellikler	15
Özellikler	16
Özellikler	17
Özellikler	18
Özellikler	19
Özellikler	20
Özellikler	21
Özellikler	22
Özellikler	23
Özellikler	24
Özellikler	25
Özellikler	26
Özellikler	27
Özellikler	28
Özellikler	29
Özellikler	30
Özellikler	31
Özellikler	32
Özellikler	33
Özellikler	34
Özellikler	35
Özellikler	36
Özellikler	37
Özellikler	38
Özellikler	39
Özellikler	40
Özellikler	41
Özellikler	42
Özellikler	43
Özellikler	44
Özellikler	45
Özellikler	46
Özellikler	47
Özellikler	48
Özellikler	49
Özellikler	50
Özellikler	51
Özellikler	52
Özellikler	53
Özellikler	54
Özellikler	55
Özellikler	56
Özellikler	57
Özellikler	58
Özellikler	59
Özellikler	60
Özellikler	61
Özellikler	62
Özellikler	63
Özellikler	64
Özellikler	65
Özellikler	66
Özellikler	67
Özellikler	68
Özellikler	69
Özellikler	70
Özellikler	71
Özellikler	72
Özellikler	73
Özellikler	74
Özellikler	75
Özellikler	76
Özellikler	77
Özellikler	78
Özellikler	79
Özellikler	80
Özellikler	81
Özellikler	82
Özellikler	83
Özellikler	84
Özellikler	85
Özellikler	86
Özellikler	87
Özellikler	88
Özellikler	89
Özellikler	90
Özellikler	91
Özellikler	92
Özellikler	93
Özellikler	94
Özellikler	95
Özellikler	96
Özellikler	97
Özellikler	98
Özellikler	99
Özellikler	100













Healthlab

Boost
Immune Formula

Supplement Facts		
Serving Size: 2 capsules Servings per Container: 15		
	Amount / Serving	%DV
Red Reishi Mushroom Extract	400 mg	*
Turkey Tail Mushroom 8:1 Extract	200 mg	*
Reishi Growing Leaf Extract 20%	250 mg	*
Vitamin K2 (as stabilised MK-7)	100 µg	153%
Vitamin D3	5,000 IU	2,500%
L-Glutamine* (Providing 6.5mg elemental Zinc)	30.0 mg	62%

*Daily value not established

Other Ingredients: Pullulan (Capsule)

This product is free from allergens, additives, and nasty fillers.
Please consume your supplements responsibly.

This product is not meant to diagnose, treat, cure or prevent any disease. Food supplements should not be used as a substitute for a balanced diet.

SUGGESTED USE:
As a dietary supplement, take 2 capsules daily, or as advised.

WARNING:
Please do not exceed recommended daily dosage or as advised by your medical practitioner.
Do not use if under the age of 18 or if the safety seal is broken. Always consult with a medical practitioner prior to use of this or any dietary supplement. Discontinue immediately if any adverse effects occur and contact your health care practitioner.

Store in a cool dry place out of the reach of direct sunlight.

KEEP OUT OF REACH OF CHILDREN

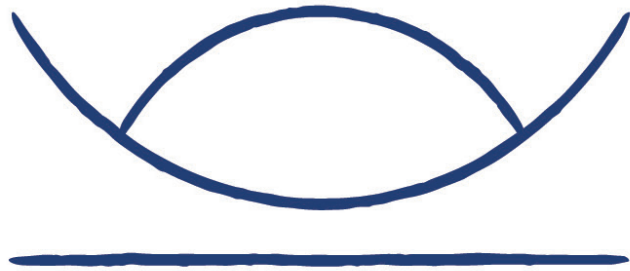
Lot Number: CB03552-01
Best Before: 02/2022

Reinvented by Club Health

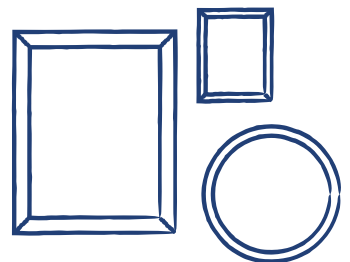
*Manufactured for Health Labs by: Customised Blends Ltd, Unit 25, Sowerby Road, Conisbrough, Rotherham, South, R6T 4AA, United Kingdom

30 Capsules
100ml

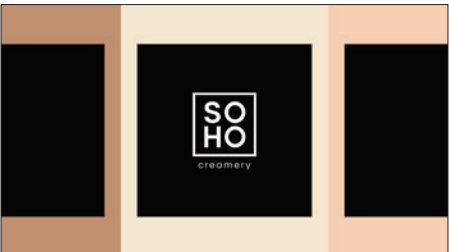
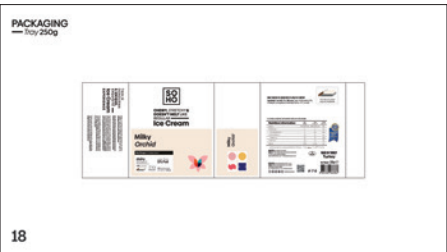
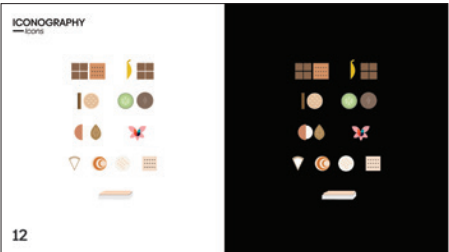
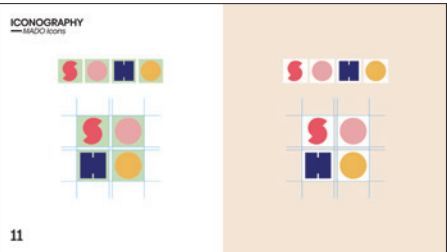
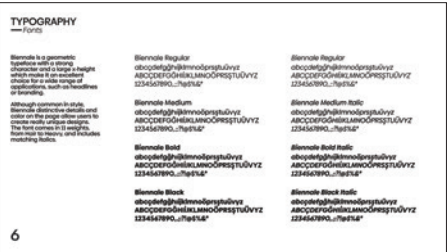
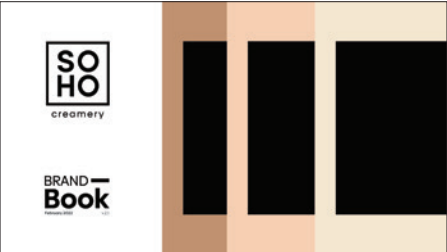
clubhealth.uk



Rue Du Soleil







SOHO CREAMERY

CHOOSE YOUR SERVING STYLE



Cone



Waffle Cone



Chocolate Waffle Cone



Cup

or



Baklava Sandwich




Waffle Cup

CHOOSE YOUR SIZE



Single
£ 9.99



Double
£ 9.99

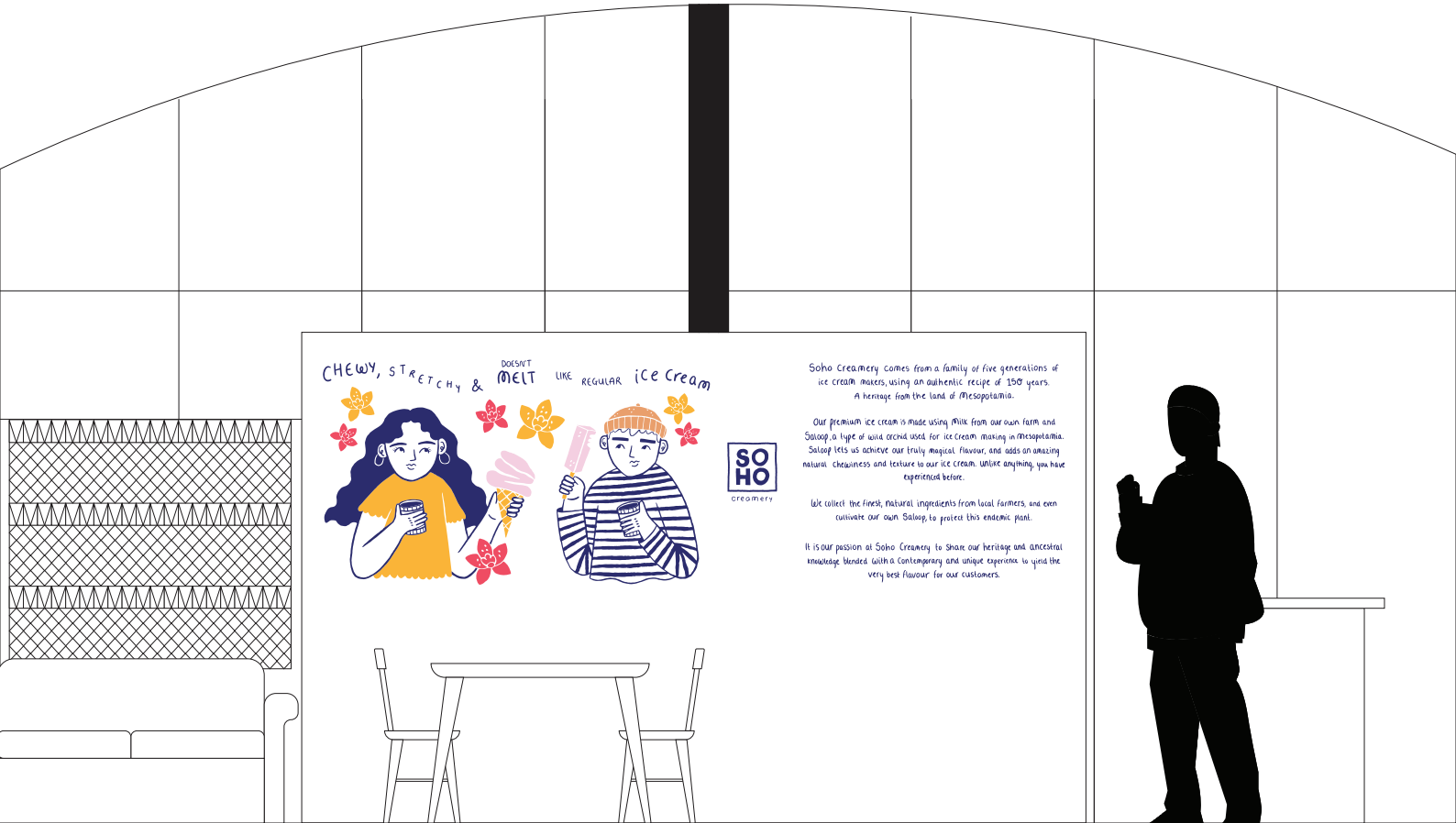


Triple
£ 9.99

CHOOSE YOUR TOPPING



Fruits Nuts Floral
+ £ 0.99



SOHO Creamery

Social Media Design




CARAVAN
COFFEE ROASTERS


creamery


creamery

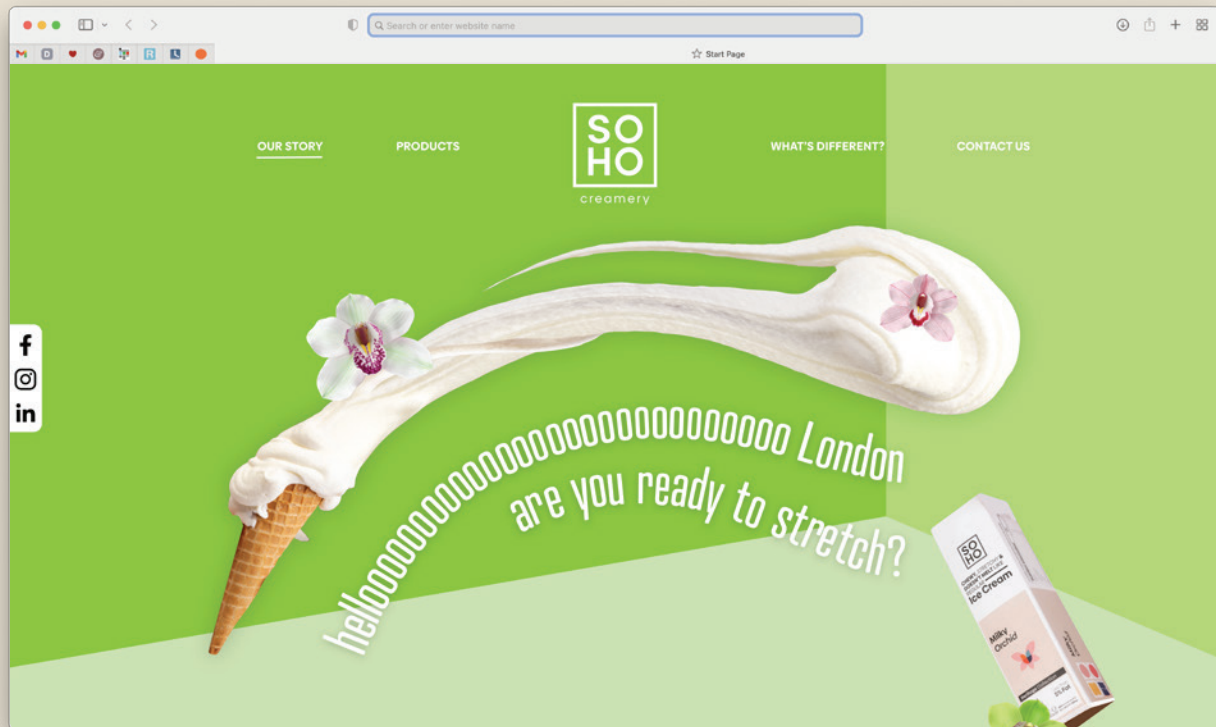
Visit our Camden shop and
get a STRETCHY ice cream on us!



 sohocreameery

sohocreameery.co.uk







GSSSH Distinguished Scholar Seminar Series

Cultural Evolutionary
Mismatches
In Response To
Collective Threat



Michele J. Gelfand

Stanford Business School

December 14, 2022

10:00 AM (GMT +3)

Founders Hall

 KOC UNIVERSITY
KOÇ UNIVERSITY
SCHOOL OF SOCIAL
SCIENCES & HUMANITIES

 KOC UNIVERSITY
KOÇ UNIVERSITY
SCHOOL OF SOCIAL
SCIENCES & HUMANITIES

zoom

Webinar ID: 970 4973 7747
Passcode: 724571

GSSSH Distinguished Scholar Seminar Series

Silicon Valley Bank
and Beyond:
Understanding
the Banking Stress
and Way Forward



Prof. Viral Acharya

Professor of Economics in the Department of Finance
at New York University Stern School of Business (NYU–Stern)

April 10, 2023

11:00 AM

Founders' Hall

 KOC UNIVERSITY
KOÇ UNIVERSITY
SCHOOL OF SOCIAL
SCIENCES & HUMANITIES

zoom

Webinar ID: 970 4973 7747
Passcode: 724571



KOÇ ÜNİVERSİTESİ
SUNA & İNAN KIRIÇ
AKDENİZ MEDENİYETLERİ
ARAŞTIRMA MERKEZİ

2018-2019
YILLIK RAPOR



KOÇ ÜNİVERSİTESİ
SUNA & İNAN KIRIÇ
AKDENİZ MEDENİYETLERİ
ARAŞTIRMA MERKEZİ

2019-2020
YILLIK RAPOR

 **AKMED**
KOÇ ÜNİVERSİTESİ
Suna & İnan Kırıç
Akdeniz Medeniyetleri
Araştırma Enstitüsü



KOÇ ÜNİVERSİTESİ
SUNA & İNAN KIRIÇ
AKDENİZ MEDENİYETLERİ
ARAŞTIRMA MERKEZİ

2020-2021
YILLIK RAPOR

 **AKMED**
KOÇ ÜNİVERSİTESİ
25.yıl

 **AKMED**
KOÇ ÜNİVERSİTESİ
Suna & İnan Kırıç
Akdeniz Medeniyetleri
Araştırma Enstitüsü



Koç Üniversitesi Tanıtım Günleri Başlıyor!

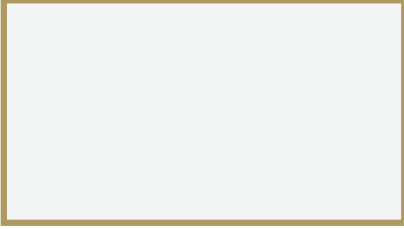
692 views • 17 Jul 2022

SUBSCRIBE 23.4K

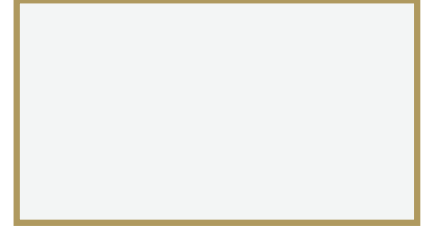
Koç University

Promotional Design





KOÇ ÜNİVERSİTESİ
RAHİMİ M. KOÇ
BİLİM MADALYASI



KOÇ UNIVERSITY
RAHİMİ M. KOÇ
MEDAL OF SCIENCE

Seminar

Please Click for Details

Koç University Rahmi M. Koç
Medal of Science Recipient

Koç Üniversitesi Rahmi M. Koç Bilim Madalyası Sahibi
Koç University Proudly Presents



Prof. Dr. | Professor
Bilge Yıldız

Massachusetts Teknoloji Enstitüsü
Nükleer Bilim ve Mühendisliği
Malzeme Bilimleri ve Mühendisliği
Breene M. Kerr Profesörü

Massachusetts Institute of Technology
Nuclear Science and Engineering
Materials Science and Engineering
Breene M. Kerr Professor

KOÇ ÜNİVERSİTESİ
RAHİMİ M. KOÇ
BİLİM MADALYASI

*Koç Üniversitesi Rahmi M. Koç Bilim Madalyası
Takdim Töreni tarihini takvimlerinize
not etmenizden mutluluk duyarız.*

*Kindly mark your calendars for
Koç University Rahmi M. Koç Medal of Science
Award Ceremony.*

Tören Ceremony
December 27 Aralık 2022 | 19.00
Rahmi M. Koç Müzesi

KOÇ ÜNİVERSİTESİ
RAHİMİ M. KOÇ
BİLİM MADALYASI

Seçici Kurul 2022

Prof. Dr.
Serdar Bulun



Northwestern Üniversitesi Tıp Fakültesi
Klinik İmmünojen ve Doğum Anestesi Dali Başkanı
John J. Saporito Kadın İmmünojen ve Doğum Profesörü
Genetik Tıp ve Kadın İmmünojen Profesörü
Genetik Enjeksiyon ve İmmünojen Profesörü
KOÇ Üniversitesi Tıp Fakültesi
Cerrahi Tıp Bilimleri Kadın İmmünojen ve Doğum Anestesi Dali
Başkanı Öğretim Üyesi

Prof. Dr.
Ataç İmamoğlu



Zürich Federal Teknoloji Üniversitesi (ETH)
Kuantum Elektronik Profesörü

Prof. Dr.
Hatice Altuğ



École Polytechnique Fédérale de Lausanne (EPFL)
Biyomimetik Sistemler, Robotik ve
Biyomimetik Sistemler Öğretim Üyesi
2022 Yılı KOÇ Üniversitesi
Rahmi M. Koç Bilim Madalyası Sahibi

Prof. Dr.
Metin Sitti

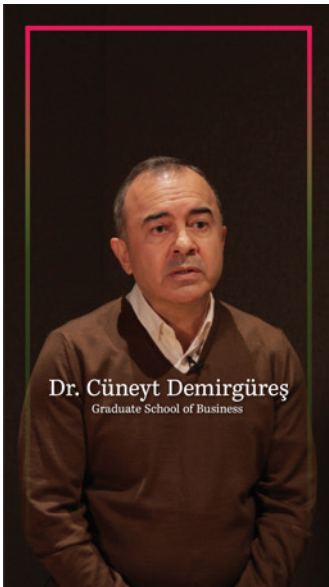


Max Planck Akademi Üyesi
Biyomimetik Sistemler
ETH Zürich Bilim Madalyası ve
2022 Yılı KOÇ Üniversitesi
Rahmi M. Koç Bilim Madalyası Sahibi
KOÇ Üniversitesi Tıp ve Mühendislik
Bilimleri Öğretim Üyesi
2018 Yılı KOÇ Üniversitesi
Rahmi M. Koç Bilim Madalyası Sahibi

Prof. Dr.
Umrhan S. İnan



Koç Üniversitesi



TOPKAPI

Typeface Design

TOPKAPI SARAYI

NO
TIME
TO
DIE

